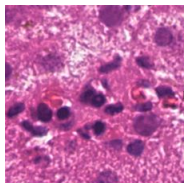
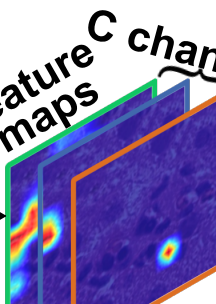


Biopsy Image



Encoder

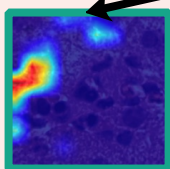
Feature maps  
C channels



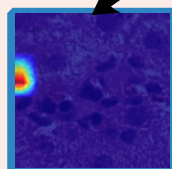
Classifier

Classification  
Loss

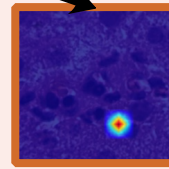
$\alpha_1*$



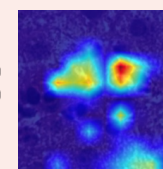
$+ \alpha_2*$



$+ \dots + \alpha_c*$



Attention map



Weighted sum of feature maps

Regularization  
Loss

Histological  
Features  
Extractor

Fat droplets

Nuclei

Clinically  
interpretable  
features

Mask

Mask

Regularization  
 $\lambda_i$  weights

Nuclei density distribution

Dataflow through the  
pretrained model

Dataflow through the  
trainable model

**Selective Attention Regularization (SAttenReg)**